

**Z SECURE** is a patented and tested attachment system for doors used in conjunction with security window films. Glass is typically the weak point many criminals exploit in order to enter a building or home. Consequently, it is desirable to have a system and method which allows for increased security. If an unwanted intruder breaks the glass, this attachment will hold the security filmed glass in the frame of the door. Currently, many of the specifications issued with construction project drawings reference a bead of silicone applied to the glass stop on the filmed surface of the glass. The security film will stay attached to the glass, but this silicone option will not hold the glass in a frame without an anchoring attachment system.

**Z SECURE** is a custom product made for each door size and style with available colors that match popular frame options including Clear Anodized, Dark Bronze, and more. Aesthetically this system is preferred over the rubberized glazing tape OR the silicone bead alternatives. **Z SECURE** is custom shaped to go over the glass stop with a .50" bite on to the frame and a 90° bend to glass. Another 90° bend will go onto the glass surface. Bend and Angle Dimensions of the shape will always vary because of the custom fit of Z Secure and depending on the glass stop.

**Figure 4A** shows a finished appearance of the Clear Anodized color choice installed onto the top lite of a door.



FIG. 4A

**Figure 4B** shows an enlarged area of Figure 4A.



FIG. 4B

### Method Description:

**Z SECURE** is a securement system which can withstand more blows than traditional glass. A pane of glass **104** is installed into a door frame support **102** with adhered security film **105**. A **Z SECURE** bracket **106** made of .040 aluminum by **PAC-CLAD®** has a glass coupler **108** portion, a gap definer **109**, and a support coupler **110**. The glass coupler is adhered to the security film via **3M™ VHB™ Tape 4910 VHB** clear .50" using 4298 UV Adhesive Promoter or Primer 94. The support coupler is adhered to the door frame support via **3M™ VHB™ Tape 4910 VHB** clear .50" using 4298 UV Adhesive Promoter or Primer 94. *Technical data for both the PAC-CLAD® and the 3M™ VHB™ Tape 4910 VHB is available upon request.*

**Figure 3A** is a side profile view of the **Z SECURE** system in one embodiment.

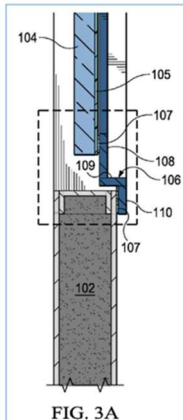


FIG. 3A

**Figure 3B** is an enlarged side profile view of the **Z SECURE** system shown in Figure 3A.

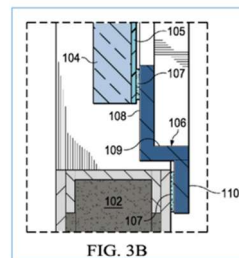


FIG. 3B